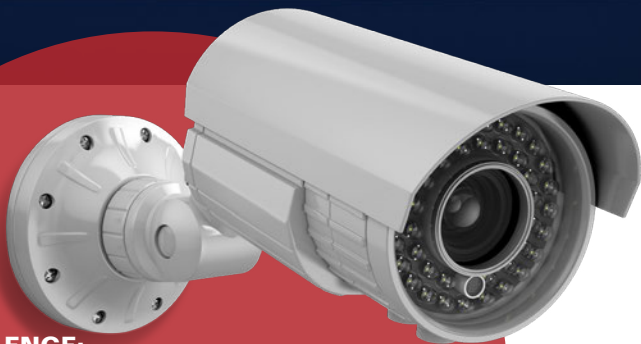
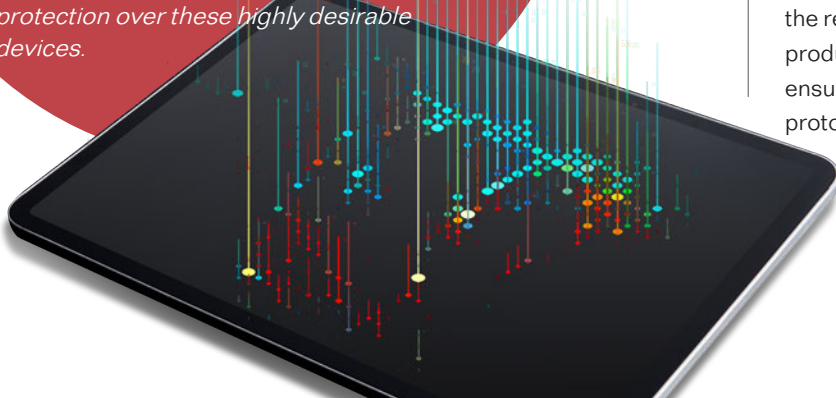


## Intelligence in sync with the speed of business.



### CHALLENGE:

*The value and desire for mobile phones has never been higher. Everyone has one and everyone inevitably wants to upgrade to the newest, coolest one. For national mobile device retailers this is a good thing! It is also a growing business protection and risk concern. Never have these retailers needed more protection over these highly desirable devices.*

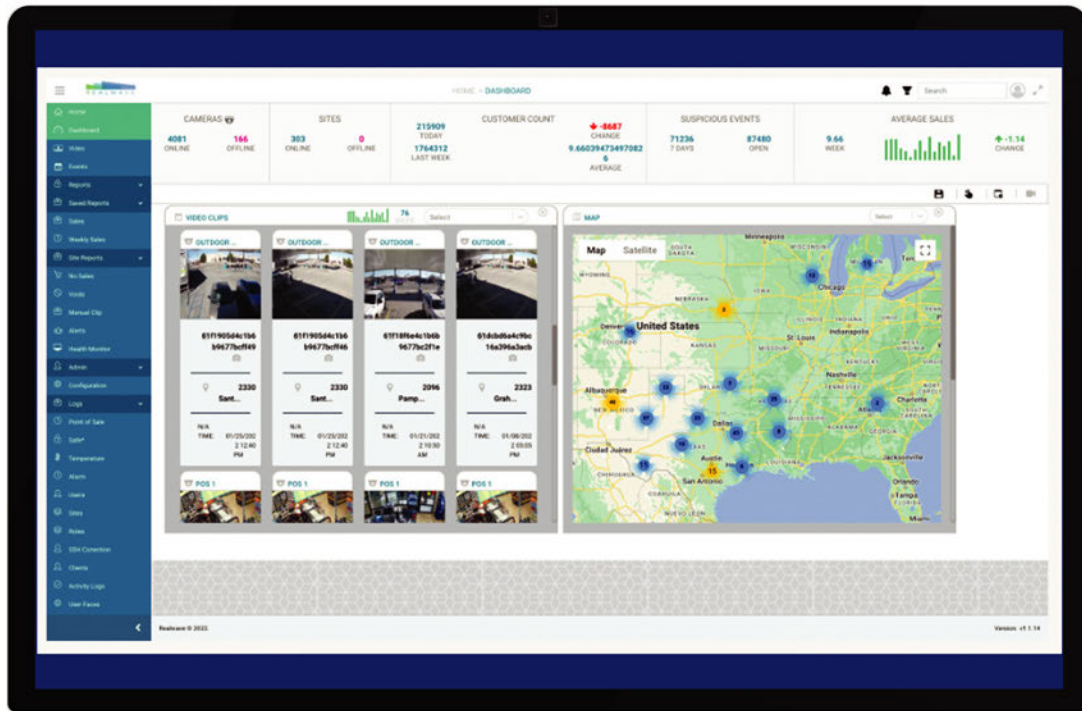


To protect their employees and the high value devices, these retailers utilize complex technology enabled vaults to safely store and protect their products. Unfortunately, these vaults are not always closed and locked which creates the opportunity for theft and potential harm to their employees. The theft behavior of “smash and grab” is amplified when potential burglars believe the vault is compromised. Once they find a weakness at a retail location with a vault, they quickly move in an organized way “hitting” all other stores in that retail chain.

To combat this risk and threat to their employees, this retailer needed data to help them understand when and where a vault was being left in a compromised position. Being armed with this data, the retailer would be able to fortify their employees and their products through alerts to store managers allowing them to ensure greater compliance with vault security and locking protocols.

**BAILIWICK®**  
 • Integrated Intelligence  
 Powered by Realwave

## SOLUTION:



Bailiwick created a solution that integrated a cloud-connected locking mechanism with the existing vault. This “Cloud Safe” (patent pending) technology by Realwave integrates with the existing camera system and sends real time alerts if the vault door is left open or unsecured.

After hours, the solution can notify security operations of a potential theft event long before the bad actors encounter the vault. In addition to the enhanced security measures, this solution provides remote auditing of all vault access events and remote management of all users.

Remote monitoring identifies a potential internal error by reporting who last accessed the vault, left the vault open and the door unlocked. This function and real time enterprise reporting identifies issues where they may provide training for employees or have an immediate response to potential threats.

Remote user management provides an amazing cost savings for the retailer as they no longer need to re-key or reprogram the vault with an on-site technician—they can simply add and remove users from a mobile device anytime, anywhere.

The solution is scalable and with a click of a button an operator can be given access to one or as many vaults as the enterprise authorizes. Integration with existing infrastructure creates real-time operational data and automated reporting and management of valuable asset threats.



**! ALERT**  
**CAM 44**  
Restricted Area

Is protecting your high value employees and high value product keeping you up at night? Do you have gaps that allow burglars to hurt your people or your brand? If so, we have new ideas that can combat the new era of bad actor threats you are facing.